



**HAL**  
open science

## Highlighting of nickel using the hyperspectral signal of minerals originating from New Caledonia lateritic profiles

Cédric Duée, Anthony da Silva Alves, Nicolas Maubec, Pierre-Gilles Blaineau, Beate Orberger, Thanh Bui, Henry Pillière, Xavier Bourrat, Monique Le Guen

### ► To cite this version:

Cédric Duée, Anthony da Silva Alves, Nicolas Maubec, Pierre-Gilles Blaineau, Beate Orberger, et al.. Highlighting of nickel using the hyperspectral signal of minerals originating from New Caledonia lateritic profiles. International workshop Geochemical cycle of Ni, Co and Sc: from mining exploration to ecotoxicity, LabEx RESSOURCES21, Oct 2017, Nancy, France. hal-01611550

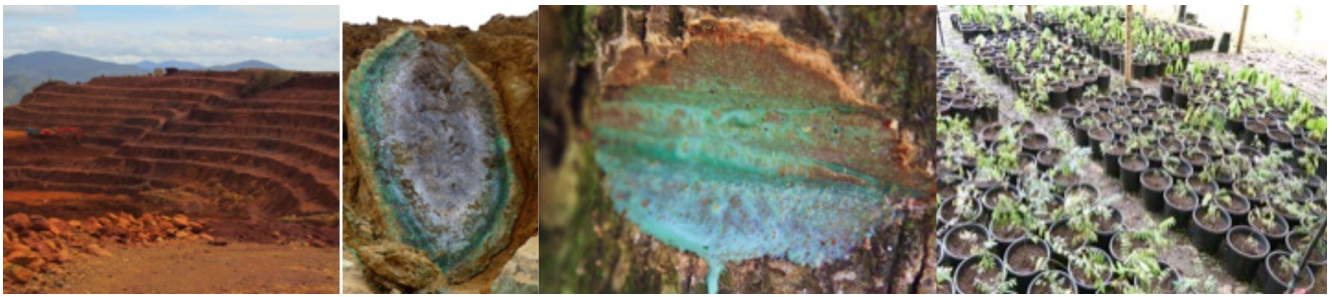
**HAL Id: hal-01611550**

**<https://hal-brgm.archives-ouvertes.fr/hal-01611550>**

Submitted on 6 Oct 2017

**HAL** is a multi-disciplinary open access archive for the deposit and dissemination of scientific research documents, whether they are published or not. The documents may come from teaching and research institutions in France or abroad, or from public or private research centers.

L'archive ouverte pluridisciplinaire **HAL**, est destinée au dépôt et à la diffusion de documents scientifiques de niveau recherche, publiés ou non, émanant des établissements d'enseignement et de recherche français ou étrangers, des laboratoires publics ou privés.



## Highlighting of nickel using the hyperspectral signal of minerals originating from New Caledonia lateritic profiles

**Duée Cédric<sup>1\*</sup>, Da Silva Alves Anthony<sup>1</sup>, Maubec Nicolas<sup>1</sup>, Blaineau Pierre-Gilles<sup>1</sup>, Orberger Beate<sup>2,3</sup>, Bui Thanh<sup>2</sup>, Pillière Henry<sup>4</sup>, Bourrat Xavier<sup>1</sup>, Le Guen Monique<sup>2</sup>**

<sup>1</sup>BRGM, 3 avenue Claude Guillemin, BP36009, 45060 Orléans Cedex 2, France

<sup>2</sup>ERAMET-ER-SLN, 1 avenue Albert Einstein, 78190 Trappes, France

<sup>3</sup>GEOPS-Université Paris Sud, Bâtiment 504, 91405 Orsay Cedex, France

<sup>4</sup>INEL-ThermoFisher Scientific, 71 rue d'Orléans, 45410 Artenay, France

\*Corresponding author: [c.duee@brgm.fr](mailto:c.duee@brgm.fr)

The SOLSA project ([www.solsa-mining.eu](http://www.solsa-mining.eu)) aims to develop an on-line-on-mine expert system coupling sonic drilling, chemical and mineralogical analyses and data treatment. In a first place, this expert system is planned for lateritic profiles of New Caledonia, known to hold nickel.

The latter is found in two forms in these profiles. First, nickel can be adsorbed on the surface or inserted in the structure of goethite ( $\alpha$ -FeOOH) present in the limonites and saprolites. Second, Ni may substitute Mg in different silicates of saprolite, like in garnierite, known to be nickel-rich and corresponding to a mixture of phyllosilicates usually occurring as vein or porosity filling.

The SOLSA system will combine several analytical techniques, such as XRD, XRF, Raman spectroscopy, RGB or hyperspectral, and the data collected will be compared to an internal library in order to identify the several minerals present in the lateritic profiles. Therefore, the elaboration of a comprehensive library, taking into account the influence of chemistry on the different signals, is mandatory.

Thus, our study focuses on the evolution of the hyperspectral signal (400-2500 nm) with the quantity of nickel for several Ni-bearing silicates present in the lateritic profile. Among the results, nickel influences the behaviour of the doublet in the 1380-1405 nm region for the specific mineral association constituting the garnierite.

### References:

- Faust, G.T (1966) *American Mineralogist* 5: 279.  
Cluzel, D., Vigier, B. (2008) *Resource Geology* 58: 161.