

Fig 1. Fontaine de Nimes (FdN) karst system and observation network location (Maréchal, 2008).

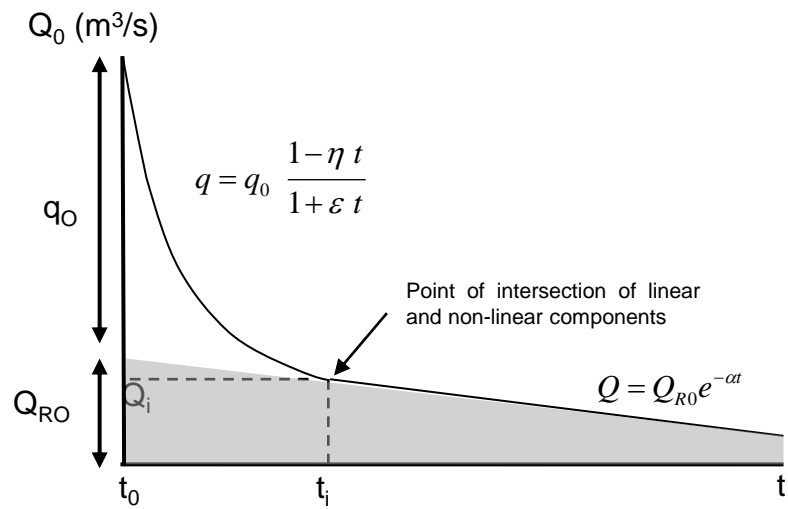


Fig. 2. Mangin method recession flow.

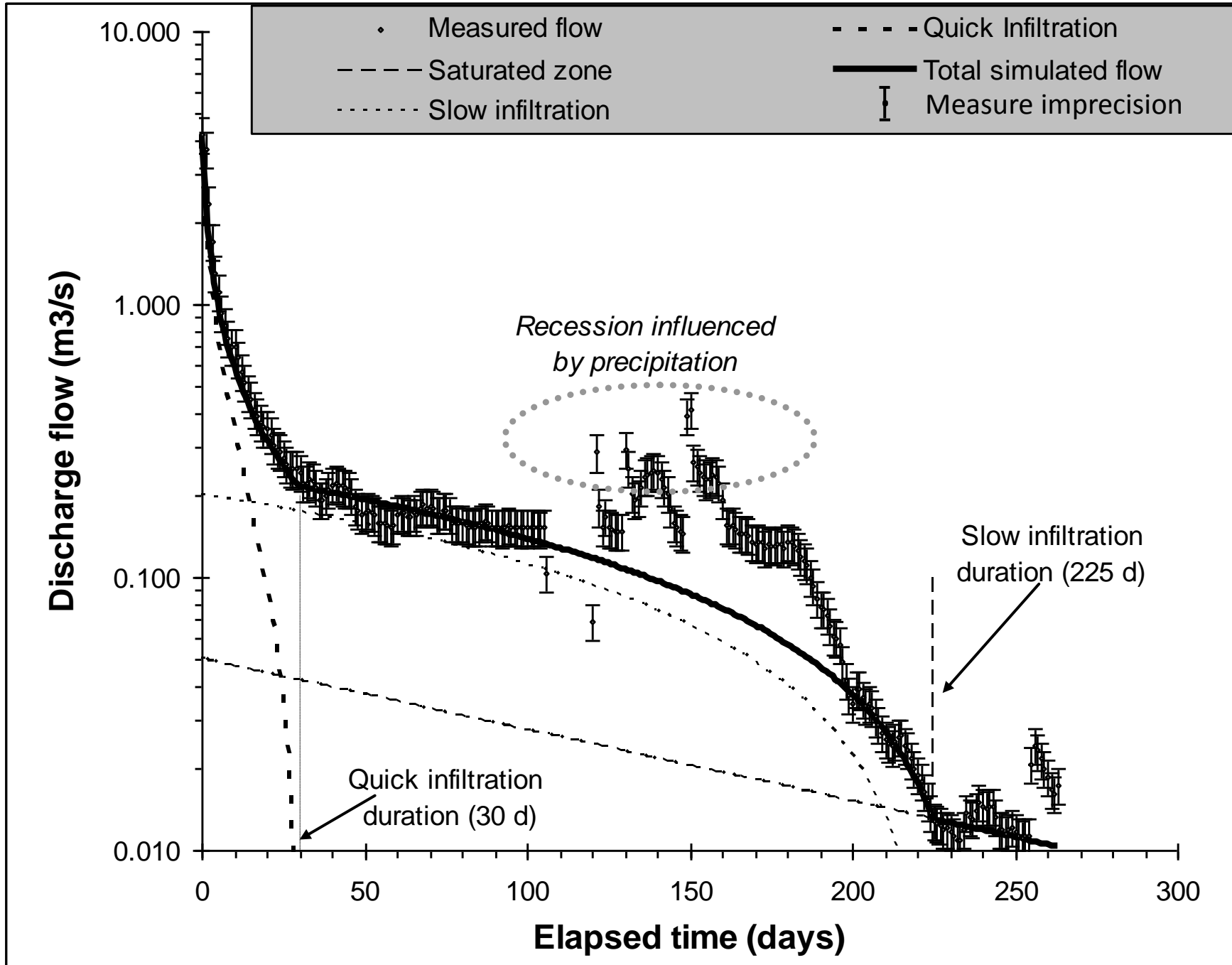


Fig. 3. Fontaine de Nimes recession flow (2005).

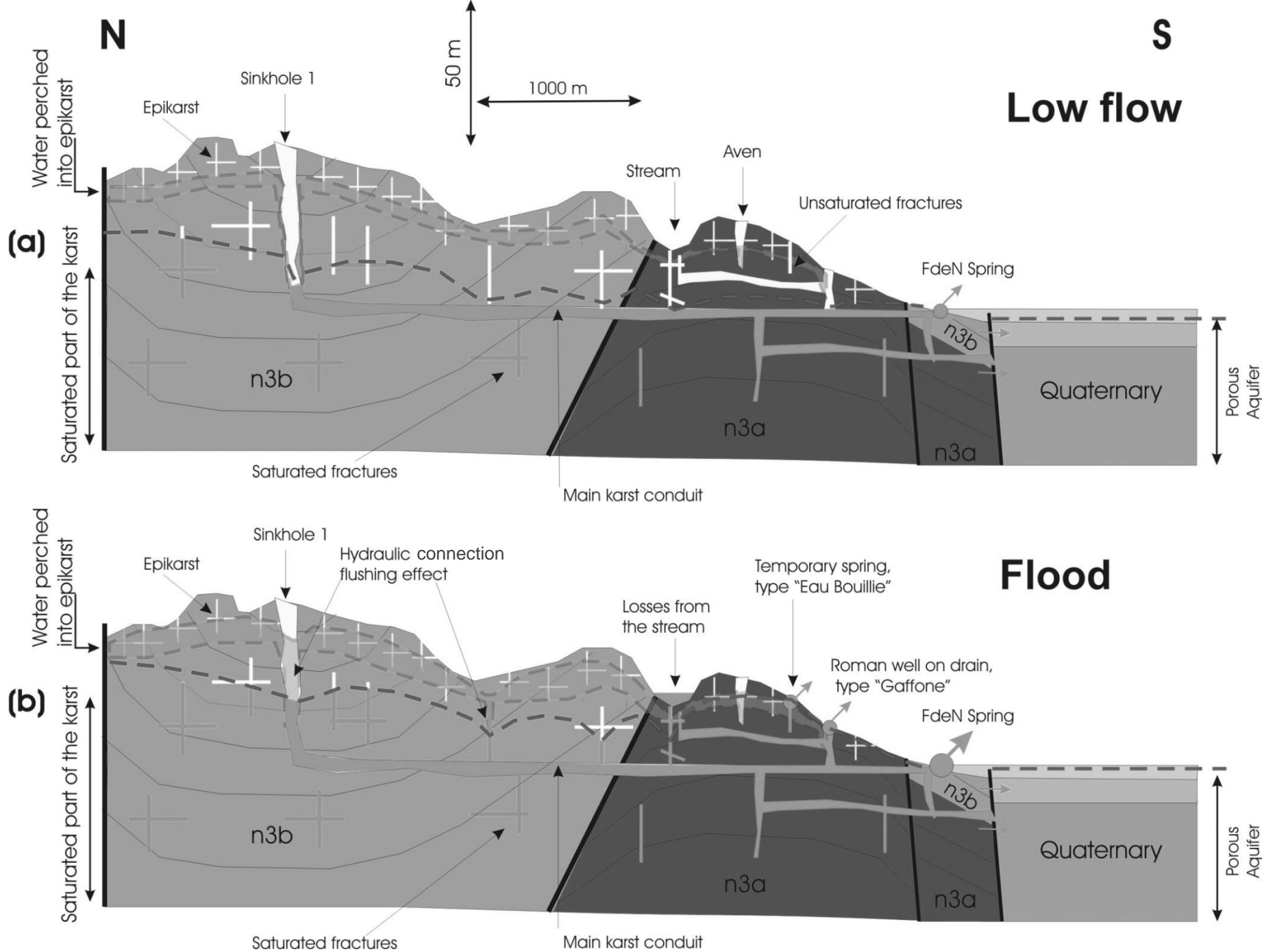


Fig. 4. Nimes karst system: hydrogeological cross-sections during low-flow (a) and flood (b) conditions.

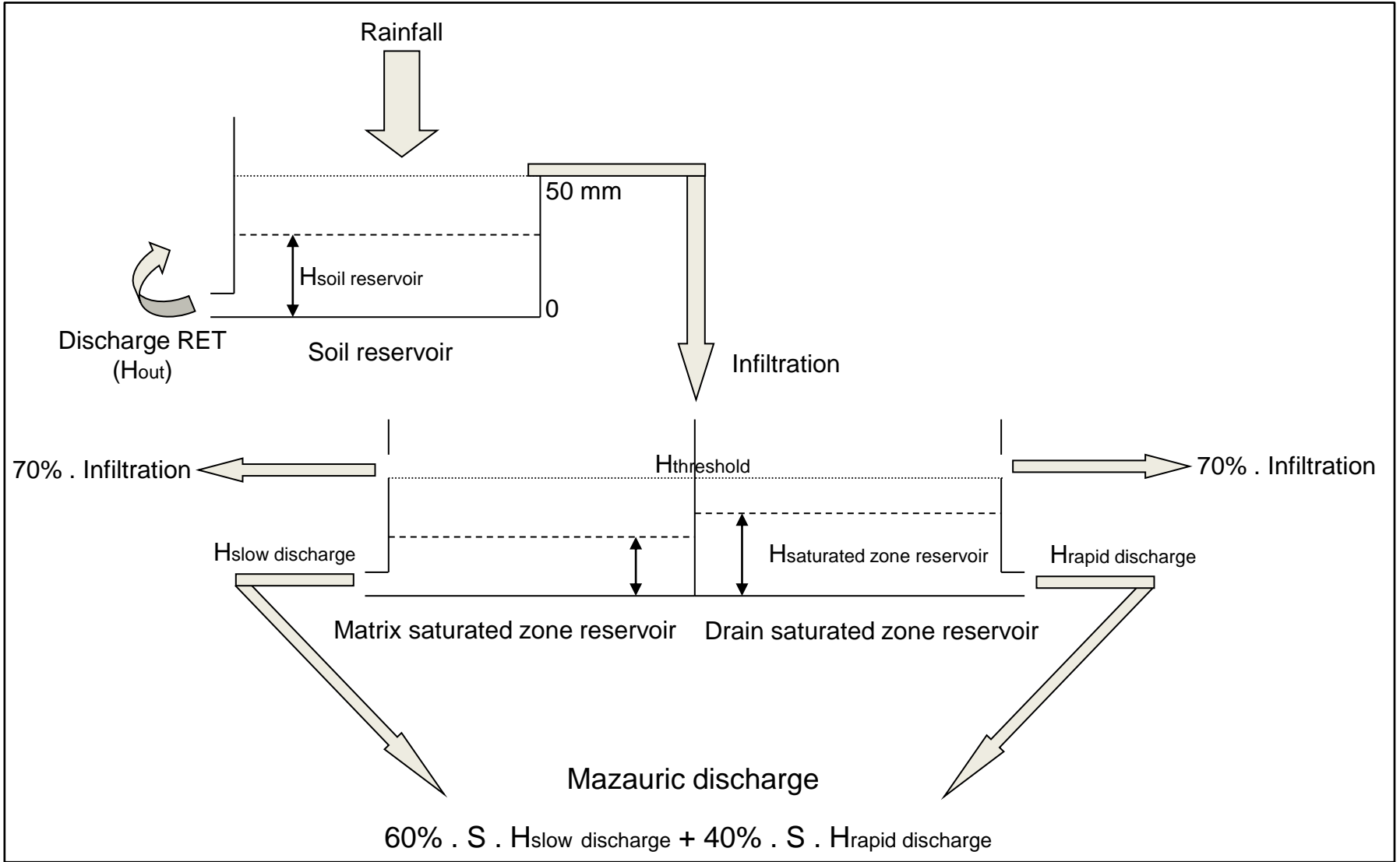


Fig. 5. General architecture of the model.

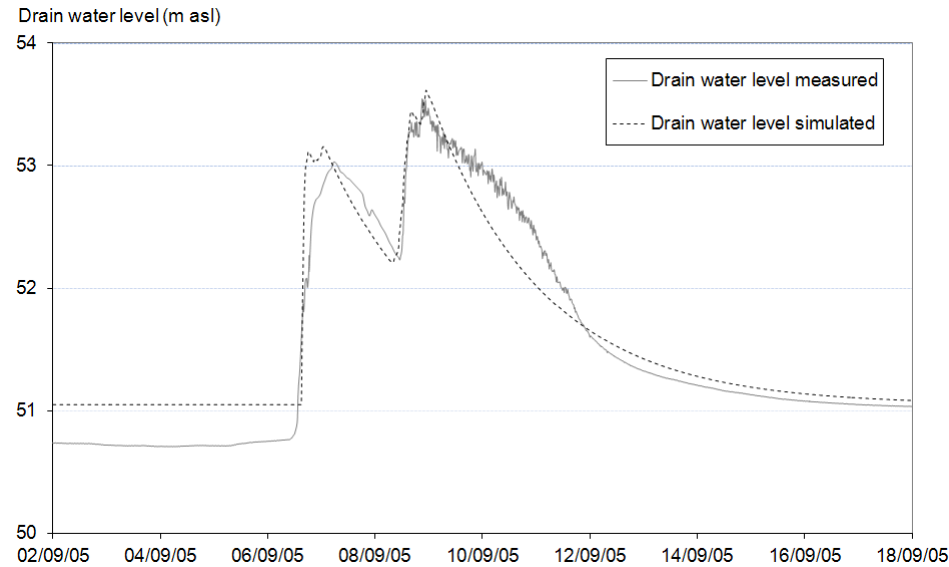
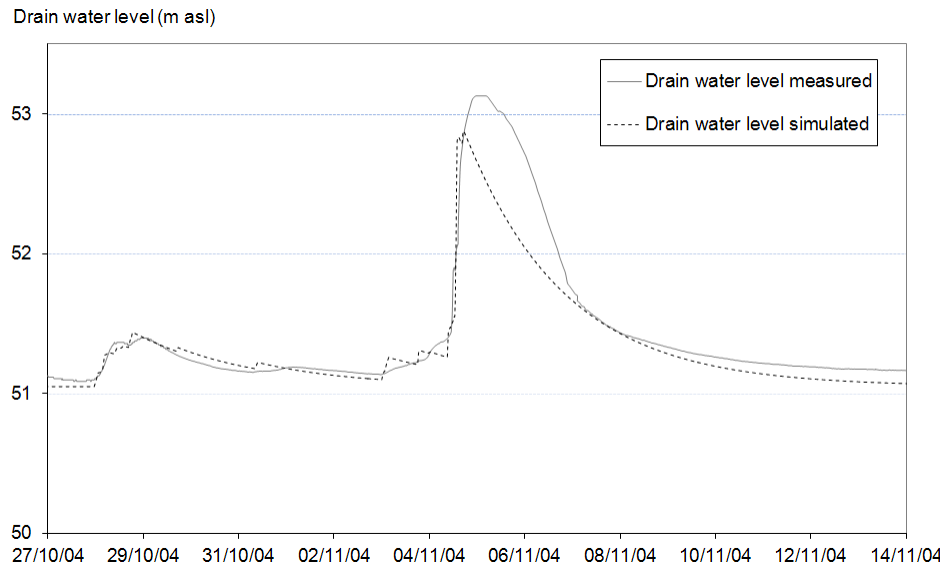
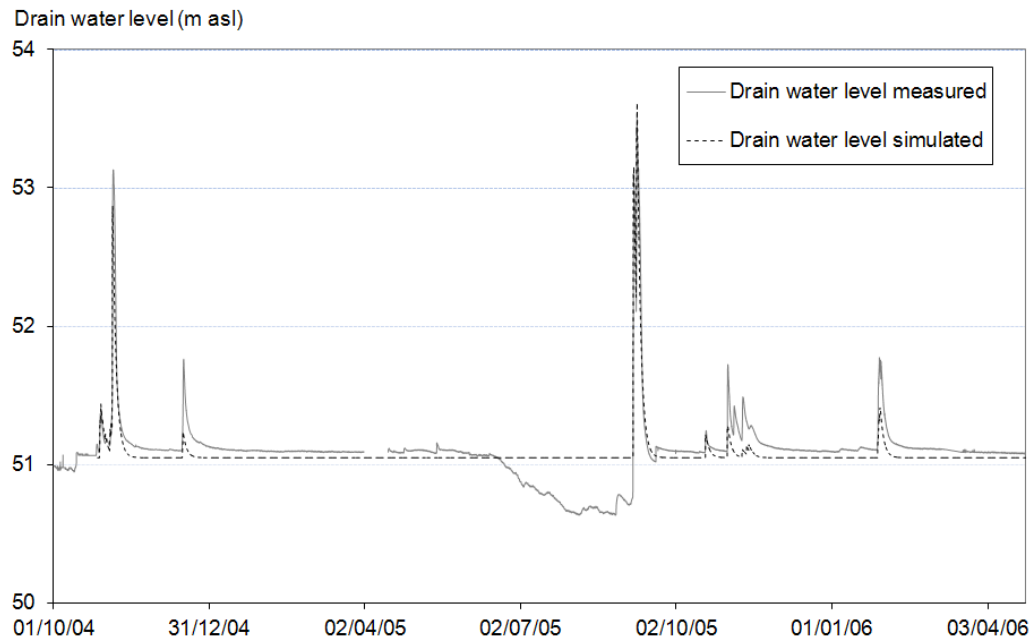


Fig. 6. Results of water-level simulation in the Mazauric drain using the model. The graph at the top shows the October 2004 – Mars 2006 period, and the details below the November 2004 and September 2005 events.

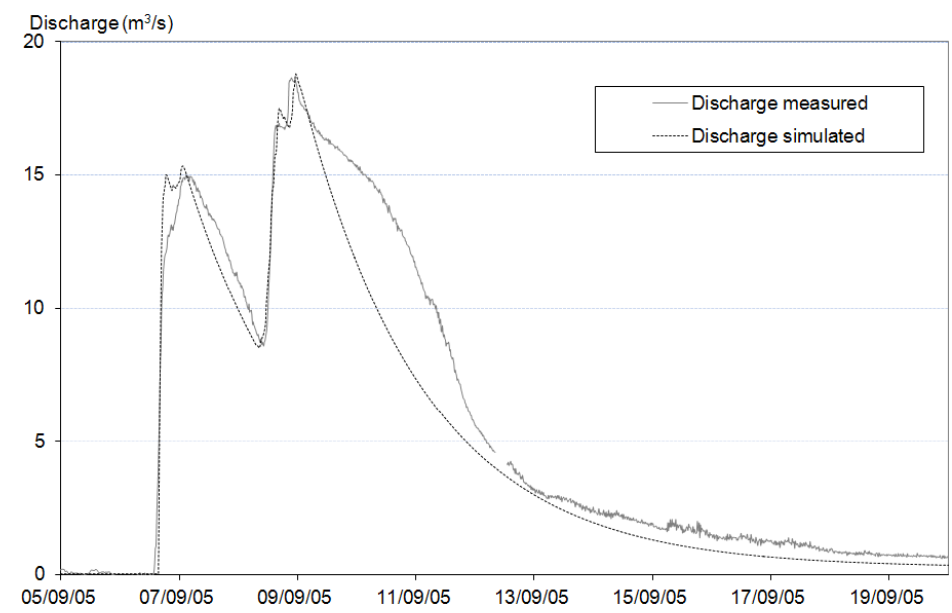
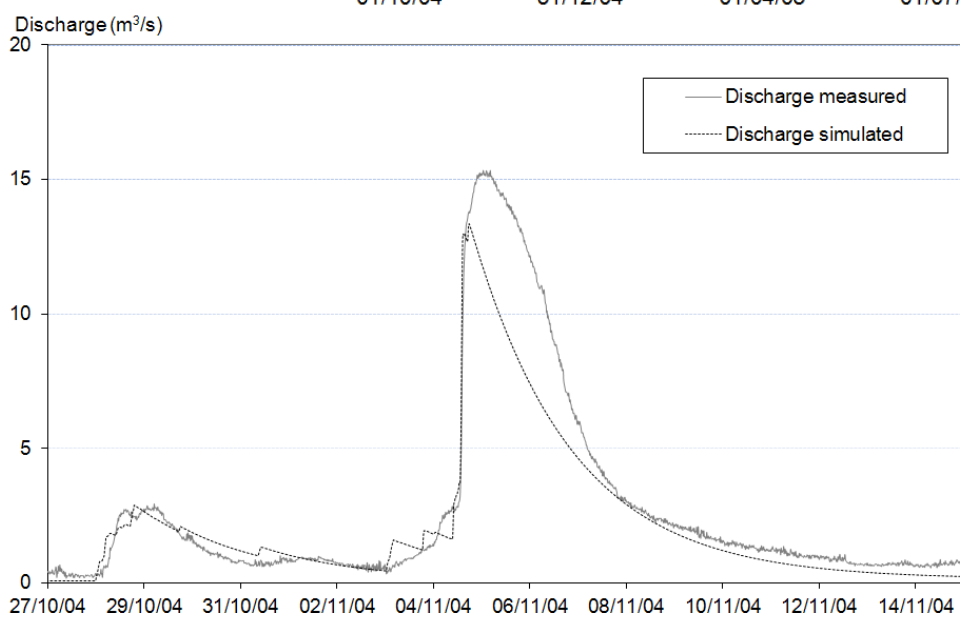
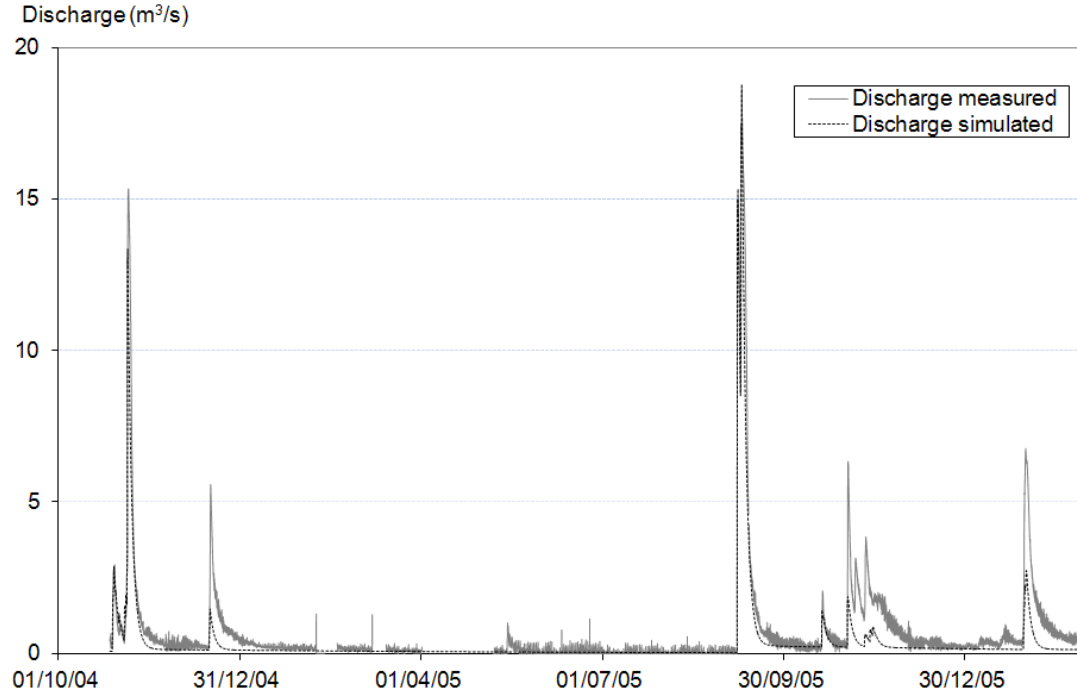


Fig. 7. Results of discharge simulation at the FdN drain using the model. The graph at the top shows the October 2004 – March 2006 period, and the details below the November 2004 and September 2005 events.

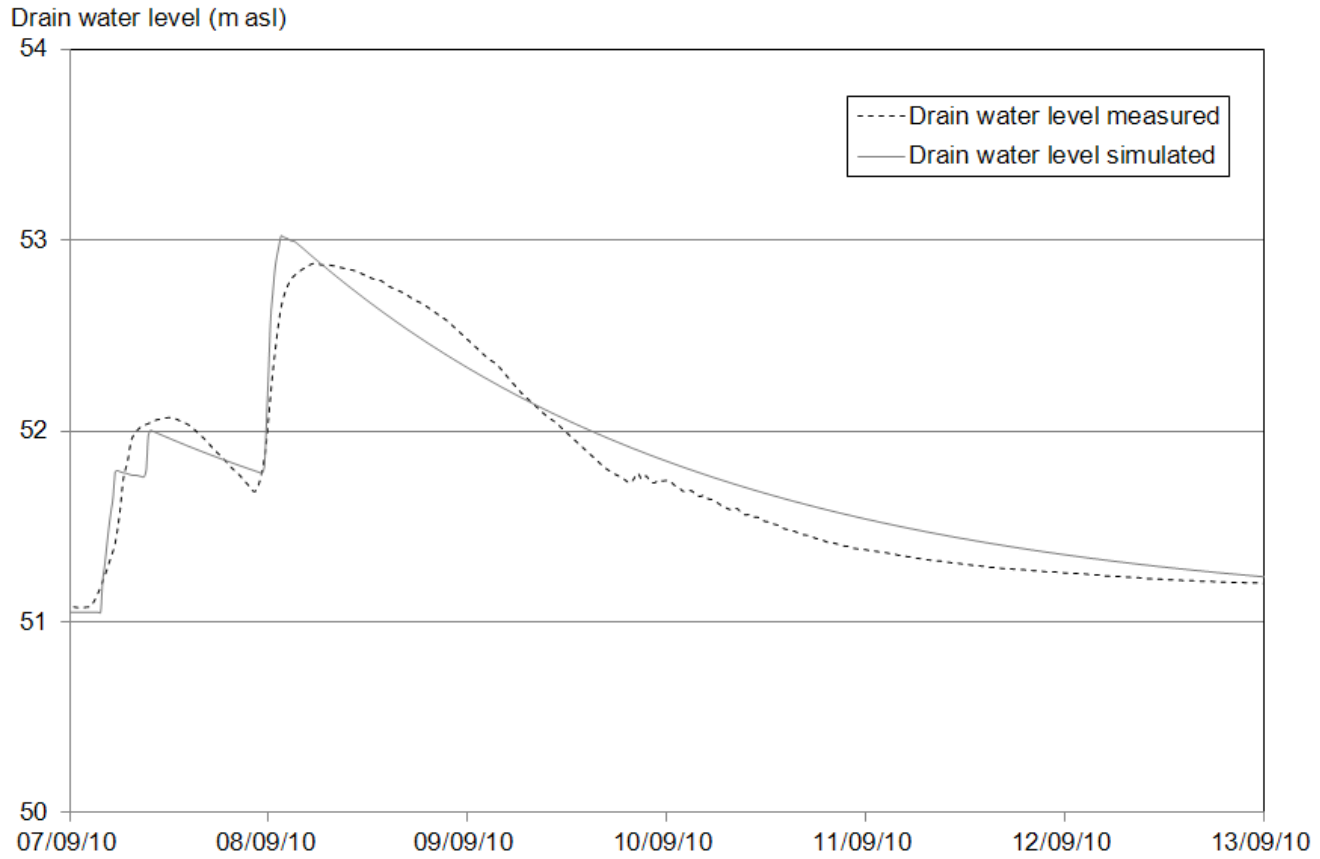


Fig. 8. Results of water-level simulation in the Mazauric drain using the model – September 2010 event.



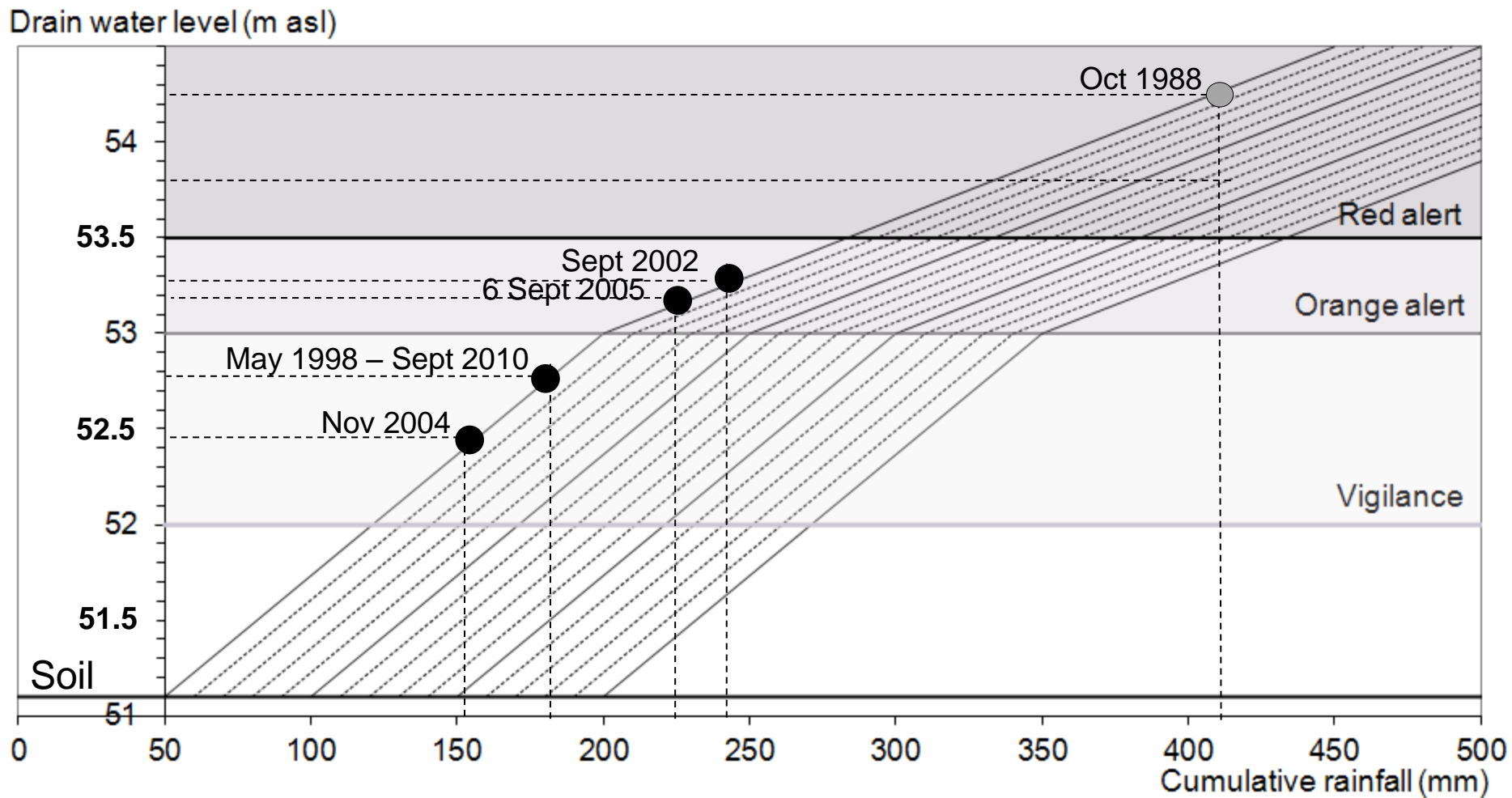


Fig. 9. "Rainfall vs. Drain water-level" abacus and position of six major events.

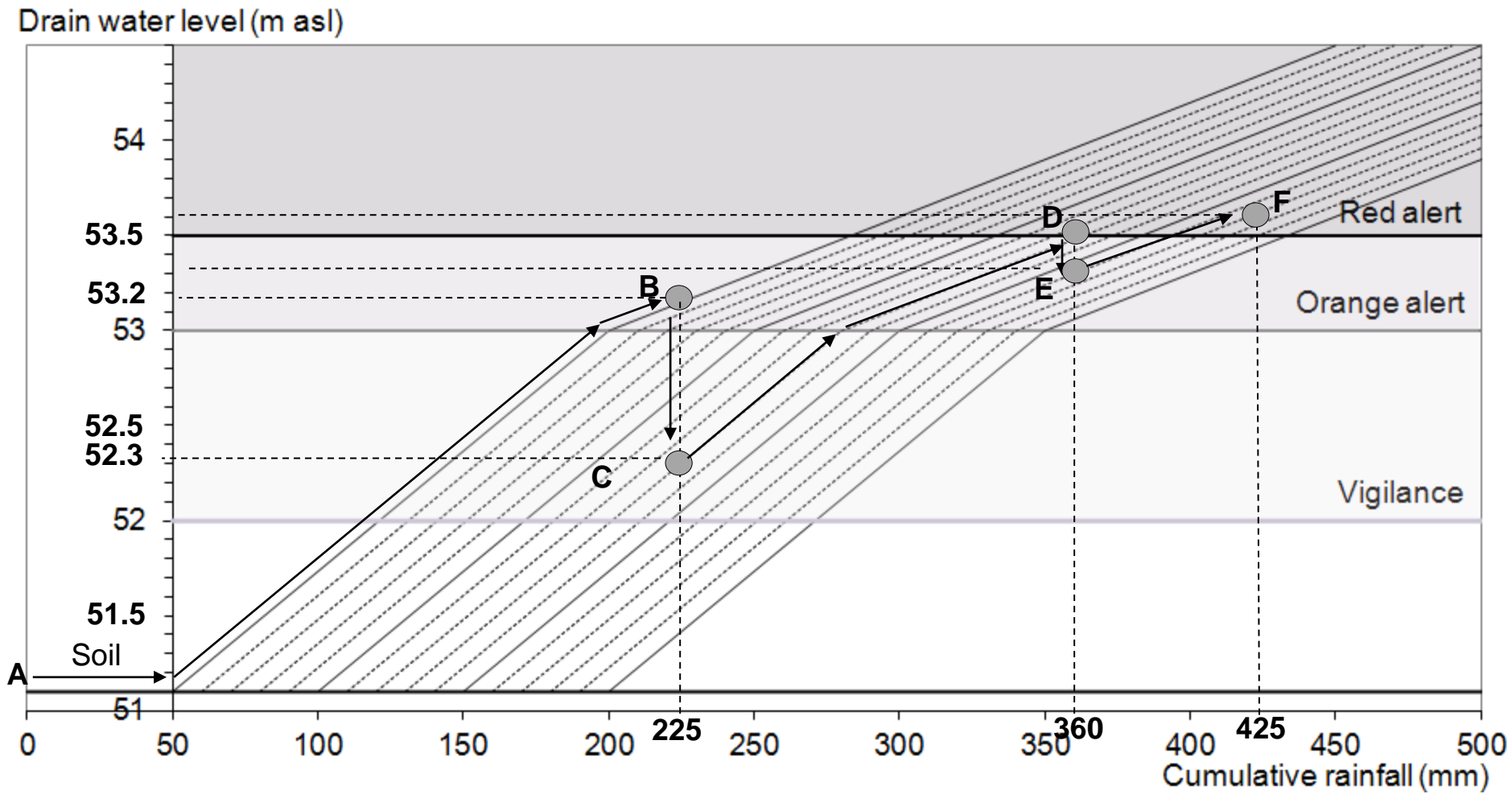


Fig. 10. Example of Rainfall vs. Drain water-level abacus use for the September 2005 event.