



**HAL**  
open science

## Pearls defects evidenced by EPMA, EDS and coupled SEM- $\mu$ -Raman spectroscopies.

Guillaume Wille, Xavier Bourrat, Régis Guégan, Bastien Farre, Daniel Chateigner

► **To cite this version:**

Guillaume Wille, Xavier Bourrat, Régis Guégan, Bastien Farre, Daniel Chateigner. Pearls defects evidenced by EPMA, EDS and coupled SEM- $\mu$ -Raman spectroscopies.. EMAS 2013 - 13th European Workshop on Modern Developments and Applications in Microbeam Analysis, May 2013, Porto, Portugal. pp.1. hal-00801783

**HAL Id: hal-00801783**

**<https://hal-brgm.archives-ouvertes.fr/hal-00801783>**

Submitted on 18 Mar 2013

**HAL** is a multi-disciplinary open access archive for the deposit and dissemination of scientific research documents, whether they are published or not. The documents may come from teaching and research institutions in France or abroad, or from public or private research centers.

L'archive ouverte pluridisciplinaire **HAL**, est destinée au dépôt et à la diffusion de documents scientifiques de niveau recherche, publiés ou non, émanant des établissements d'enseignement et de recherche français ou étrangers, des laboratoires publics ou privés.

## PEARLS DEFECTS EVIDENCED BY EPMA, EDS AND COUPLED SEM-MICRO-RAMAN SPECTROSCOPIES

G. Wille<sup>1</sup>, X. Bourrat<sup>1</sup>, R. Guégan<sup>2</sup>, B. Farre<sup>2</sup>, D. Chateigner<sup>3</sup>

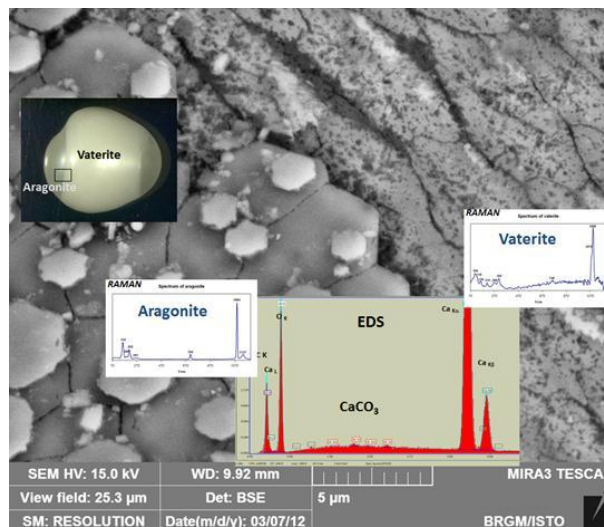
<sup>1</sup>BRGM, 3 avenue Claude Guillemin, P.O. Box 6009, FR-45060 Orléans Cedex 2, France

<sup>2</sup>ISTO, CNRS Campus Géosciences, 1A Rue de la férolierie, 45100 Orléans, France / ISTO, Université Orléans, 1A rue de la Férollerie, 45100 Orléans, France

<sup>3</sup>CRISMAT, 6 Bd. M. Juin, 14050 Caen, France

Pearls (*Hyriopsis cumingii*) are produced from a natural biomineralisation process controlled by organic molecules. Pearl biocrystal is a hybride composite organic / mineral (3 % / 97%). The regular form of pearl mineralization is aragonite, a hexagonal polymorph of calcium carbonate. This biocarbonate shape is a stack of nanometric thickness hexagonal plates stacked along the c-axis of the aragonite crystal. It diffracts as a single crystal so called MESOCRISTAL. This mineralization produces well-known shiny and "pearly" aspect.

Sometimes, pearls show a biomineralisation defect characterized by a lack of shine (also called "milky pearl"). It has been established that this defects is related to the change in mineralization form from hexagonal aragonite to orthorhombic vaterite.



***SEM picture of pearl surface at the interface of the defect (inset is the pearl, squared is the zone observed); superposed are the EDS spectrum of CaCO<sub>3</sub> on both sides and Raman spectra showing the different polymorphs.***

SEM images and Raman spectra acquired in the SEM are used to characterize the biocrystals structure of both regular and defective nacre of pearls. The mineralization growth process was also investigated coupling cathodoluminescence (CL) imaging with EPMA mapping. Growth rings were evidenced this way, related to a daily alternation, either side of the interface, i.e. in vaterite and aragonite. EPMA is used for mapping and quantifying trace elements on the same banded structure: CL signal in both aragonite and vaterite is connected to Manganese traces (few hundreds of ppm). Higher Mn contents are observed in vaterite zone compared to that of aragonite.