

A coupled large-scale model for hydromechanical simulation of CO₂ geological storage

Pierre Sochala, Vivien Desveaux, Darius Seyedi, Jeremy Rohmer

► **To cite this version:**

Pierre Sochala, Vivien Desveaux, Darius Seyedi, Jeremy Rohmer. A coupled large-scale model for hydromechanical simulation of CO₂ geological storage. SIAM Geosciences 2011, Mar 2011, Long Beach, United States. hal-00606982

HAL Id: hal-00606982

<https://hal-brgm.archives-ouvertes.fr/hal-00606982>

Submitted on 7 Jul 2011

HAL is a multi-disciplinary open access archive for the deposit and dissemination of scientific research documents, whether they are published or not. The documents may come from teaching and research institutions in France or abroad, or from public or private research centers.

L'archive ouverte pluridisciplinaire **HAL**, est destinée au dépôt et à la diffusion de documents scientifiques de niveau recherche, publiés ou non, émanant des établissements d'enseignement et de recherche français ou étrangers, des laboratoires publics ou privés.

A coupled large-scale model for hydromechanical simulation of CO_2 geological storage

P. Sochala*, V. Desveaux*, J. Rohmer*, and D. Seyedi*

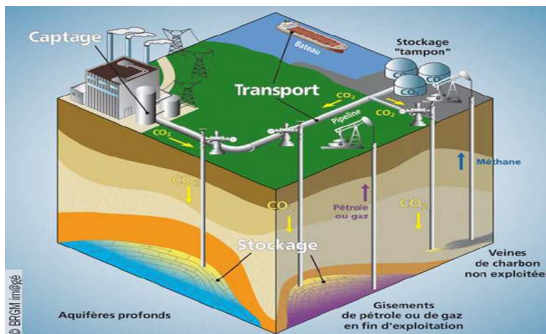
* BRGM (French Geological Survey)
Natural Risks and Safety of CO_2 storage
Orléans

SIAM Geosciences 2011
March 21 - 24, Long Beach



General introduction

Greenhouse gas emissions \Rightarrow Global warming



CO₂ injection \Rightarrow reservoir overpressure \Rightarrow caprock damage or fault reactivation ?

General introduction

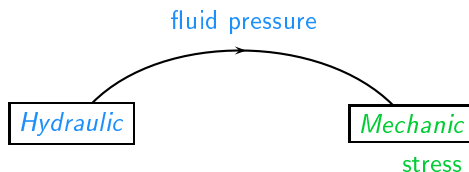
Hydraulic

Mechanic

Hydromechanical modeling of CO_2 sequestration

- ▶ Tough2 - FLAC^{3D} → *Rutqvist et al.*
- ▶ ToughReact - FLAC^{3D} → *Taron et al.*
- ▶ Modified CODE_BRIGTH → *Vilarrasa et al.*
- ▶ ATH2VIS → *Mainguy et al.*

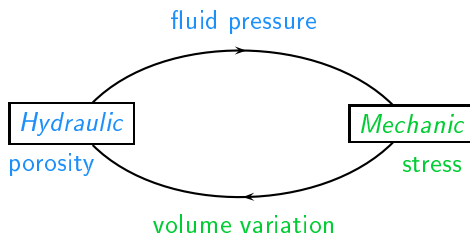
General introduction



Hydromechanical modeling of CO_2 sequestration

- ▶ Tough2 - FLAC^{3D} → *Rutqvist et al.*
- ▶ ToughReact - FLAC^{3D} → *Taron et al.*
- ▶ Modified CODE_BRIGTH → *Vilarrasa et al.*
- ▶ ATH2VIS → *Mainguy et al.*

General introduction



Hydromechanical modeling of CO_2 sequestration

- ▶ Tough2 - FLAC^{3D} → *Rutqvist et al.*
- ▶ ToughReact - FLAC^{3D} → *Taron et al.*
- ▶ Modified CODE_BRIGTH → *Vilarrasa et al.*
- ▶ ATH2VIS → *Mainguy et al.*

Geohydrological system

- ▶ Two-phase γ (liquid, gaz) and two-component χ (water, CO_2) flow
- ▶ **Mass conservation** of χ with a source term S_χ

$$\partial_t \left(\varphi \sum_{\gamma} \rho_{\gamma} s_{\gamma} \omega_{\chi, \gamma} \right) + \nabla \cdot \left(\sum_{\gamma} \omega_{\chi, \gamma} \mathbf{F}_{\gamma} \right) = S_{\chi}$$

φ porosity, ρ_{γ} density, s_{γ} saturation, $\omega_{\chi, \gamma}$ mass fraction of χ in γ

- ▶ **Darcy's law**

$$\mathbf{F}_{\gamma} = -\rho_{\gamma} \frac{k_i k_{r, \gamma}}{\mu_{\gamma}} (\nabla p_{\gamma} - \rho_{\gamma} g \mathbf{e}_z)$$

k_i porous media intrinsic permeability, $k_{r, \gamma}$ relative permeability
 μ_{γ} dynamic viscosity, p_{γ} pressure

- ▶ Hydraulic relations \rightarrow *Van-Genuchten80, Mualem76*
 Thermodynamic equilibrium \rightarrow *Spycher&Pruess05*

Mechanical equations

► Conservation of momentum

$$\nabla \cdot \sigma + \rho g e_z = 0$$

σ total stress tensor, ρ average density

► Effective stress concept

$$\sigma = \sigma' - b p I$$

σ' effective stress tensor, b Biot's coefficient, p pore pressure

► Linear elasticity

$$\sigma' = \frac{E}{1 + \nu} \left(\nabla u + {}^t \nabla u + \frac{\nu}{1 - 2\nu} (\nabla \cdot u) I \right)$$

E Young's modulus, ν Poisson's ratio, u displacement

Coupling conditions

- ▶ **pore pressure** equal to the mean-value of the two-phase system

$$p = \sum_{\gamma} s_{\gamma} p_{\gamma}$$

- ▶ **permeability-porosity relation** \rightarrow *David05*

$$k_i = k_i^0 \left(\frac{\varphi}{\varphi^0} \right)^m$$

m empirical parameter

- ▶ **Biot's law** \rightarrow *Biot41*

$$d\varphi = b d(\operatorname{div}(u)) + \frac{1}{M} dp$$

M Biot's modulus

Tough2 and Code_Aster discretization

Tough2 → Lawrence Berkeley National Laboratory

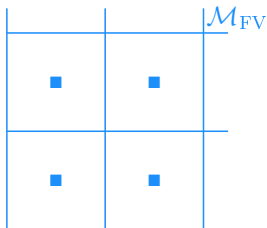
- ▶ Multi-phase fluid and heat flow in porous and fractured media
- ▶ **Finite volume** with finite difference evaluation of the flux term
Integrated Finite Difference Method → *Narasimham76*
- ▶ Euler implicit scheme
- ▶ Newton Raphson Algorithm

Code_Aster → EDF (French Electricity Compagny)

- ▶ Non-linear models of mechanical phenomena
- ▶ **Finite element**

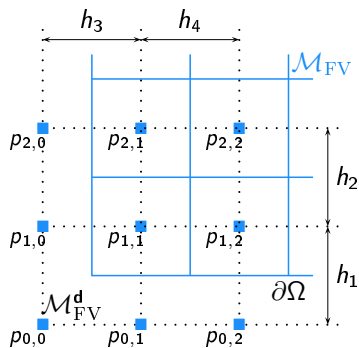
Transfer operator $\mathcal{T}_{FV \rightarrow FE}$ for pressure field

step 1 - construction of a dual mesh



Transfer operator $\mathcal{T}_{FV \rightarrow FE}$ for pressure field

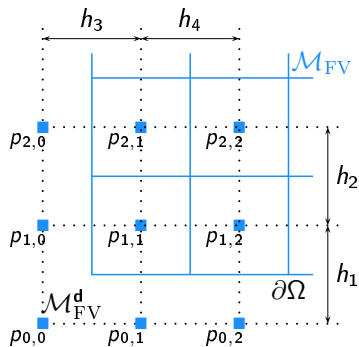
step 1 - construction of a dual mesh



$$p_{0,i} = p_{1,i} + \frac{h_1}{h_2}(p_{1,i} - p_{2,i})$$

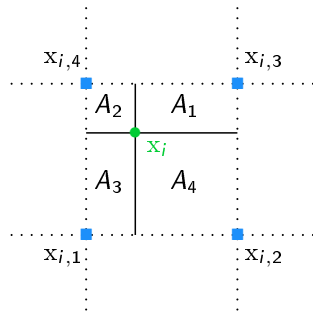
Transfer operator $\mathcal{T}_{\text{FV} \rightarrow \text{FE}}$ for pressure field

step 1 - construction of a dual mesh



$$p_{0,i} = p_{1,i} + \frac{h_1}{h_2}(p_{1,i} - p_{2,i})$$

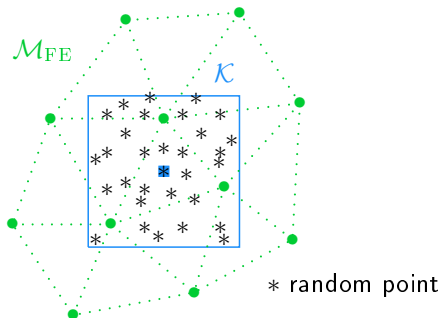
step 2 - linear interpolation



$$p_{\text{FE}}(x_i) = \sum_{k=1}^4 \frac{A_k}{A} p_{\text{FV}}(x_{i,k})$$

Transfer operator $\mathcal{T}_{\text{FE} \rightarrow \text{FV}}$ for porosity field

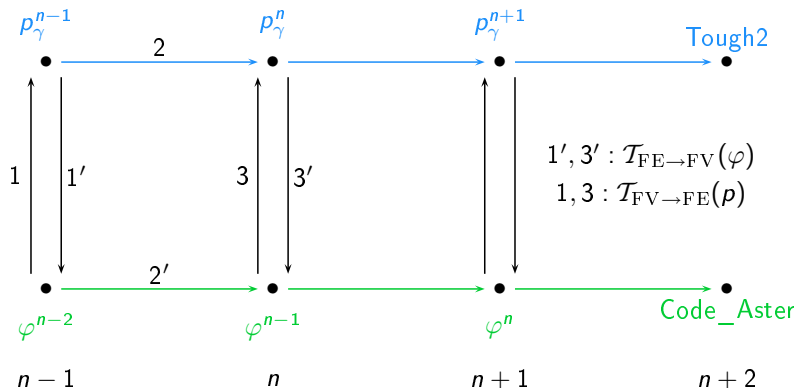
Mean-value of φ on \mathcal{K} estimated by MC



$$\varphi_{\text{FV}}|_{\mathcal{K}} = \frac{1}{N} \sum_{j=1}^N \varphi_{\text{FE}}(x_j)$$

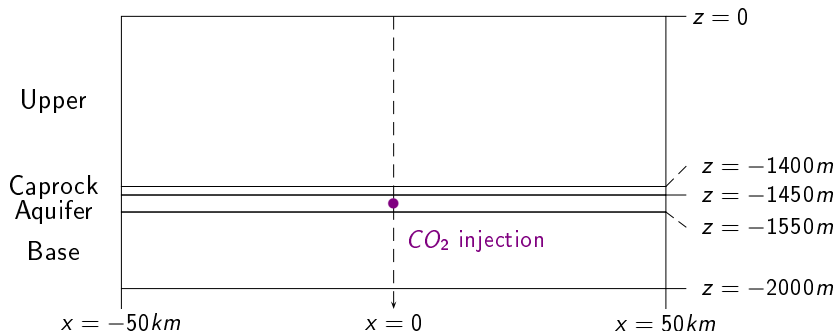
Time coupling

Conventional Parallel Staggered algorithm \rightarrow *Piperno et al 95*



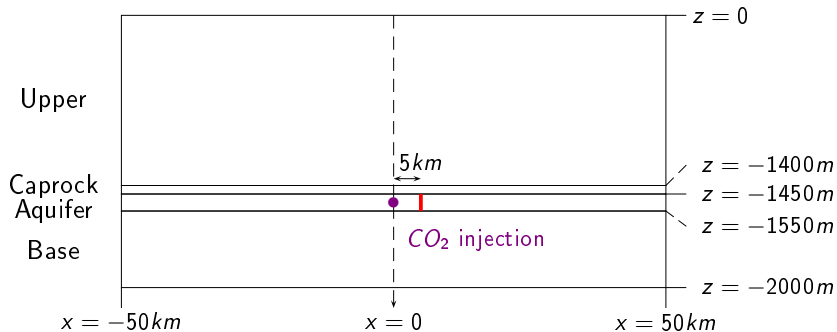
Test case presentation

- ▶ CO_2 injection by horizontal well in deep aquifer
- ▶ 2D geometry $\Omega = [-50km, 50km] \times [0, -2km]$ and $T = 5years$
- ▶ $S_{CO_2} = 500t/m/year$
- ▶



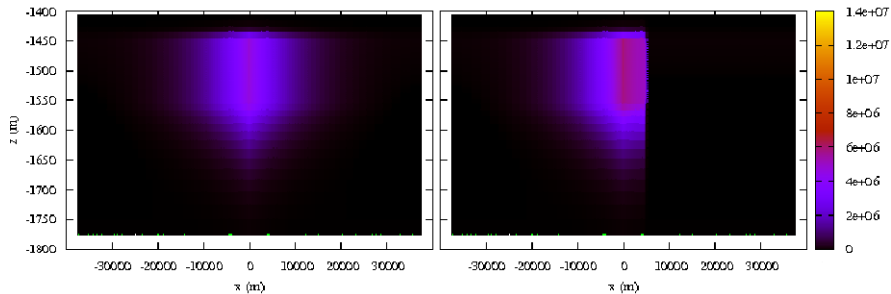
Test case presentation

- ▶ CO_2 injection by horizontal well in deep aquifer
- ▶ 2D geometry $\Omega = [-50km, 50km] \times [0, -2km]$ and $T = 5years$
- ▶ $S_{CO_2} = 500t/m/year$
- ▶ impact of a sealing fault near the injection zone



Overpressure (Pa)

t=1 year

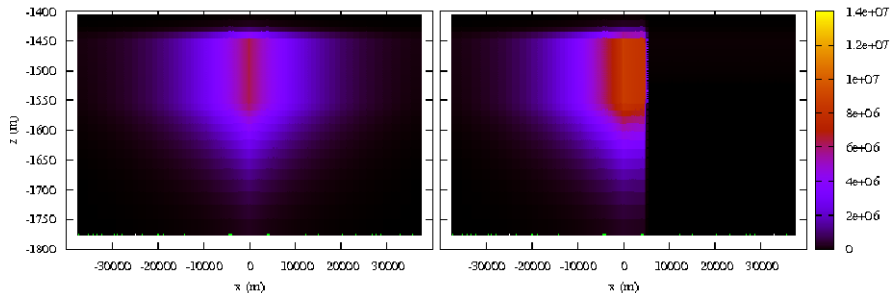


Initial case

Perturbated case

Overpressure (Pa)

t=2 years

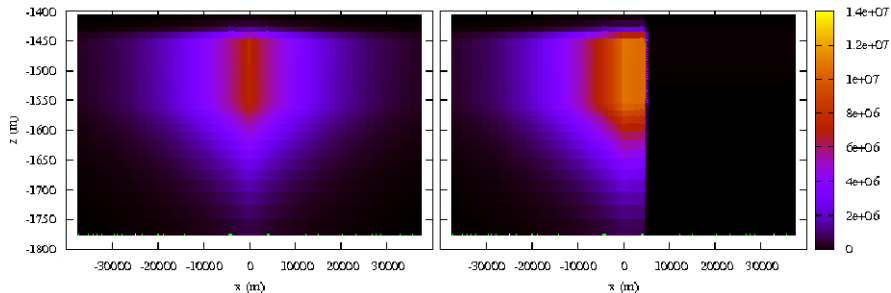


Initial case

Perturbated case

Overpressure (Pa)

t=3 years

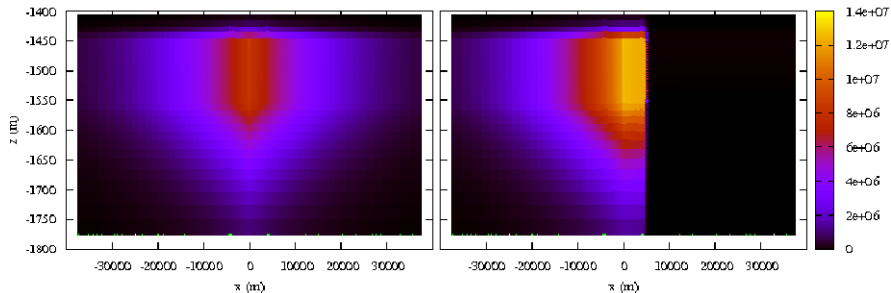


Initial case

Perturbated case

Overpressure (Pa)

t=4 years

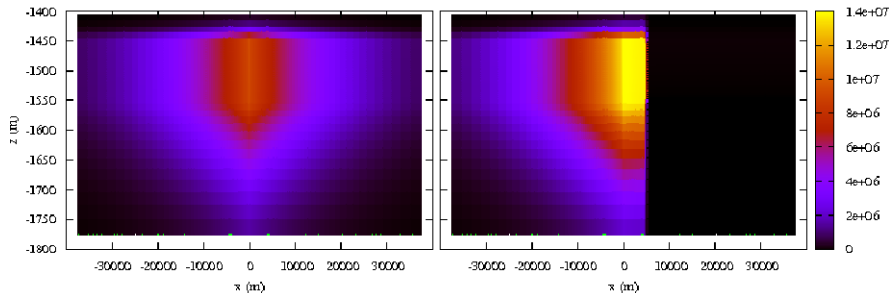


Initial case

Perturbated case

Overpressure (Pa)

t=5 years

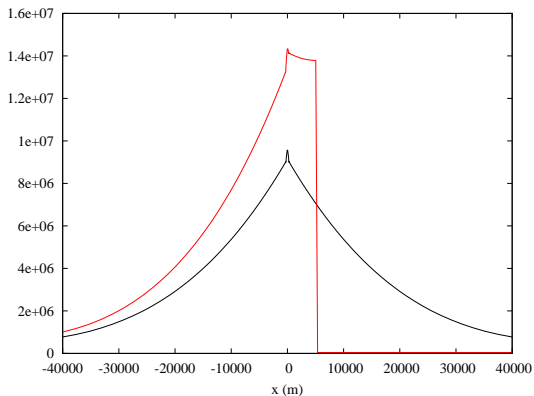


Initial case

Perturbated case

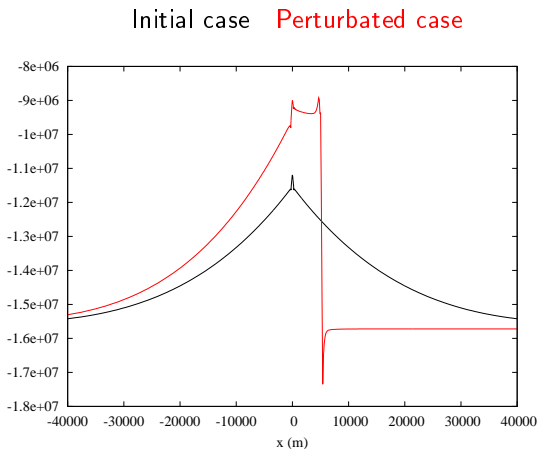
Overpressure in the aquifer (Pa)

Initial case Perturbated case



Increase of 40% of the overpressure at 5 years

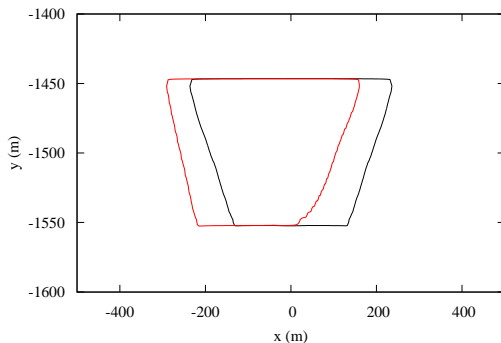
Horizontal effective stress change due to injection (Pa)



More change in effective stress

CO₂ plume

Initial case Perturbated case



Displacement at the opposite side of the fault

Conclusion

- ▶ robust method to transfer fields between different meshes
- ▶ efficient parallel time coupling algorithm
- ▶ significant increase of the overpressure due to the impermeable fault

Further work

- ▶ tensile and shear stress failure criteria → sustainable pressure
- ▶ non-linear constitutive law of the geological formation
- ▶ more realistic geometry